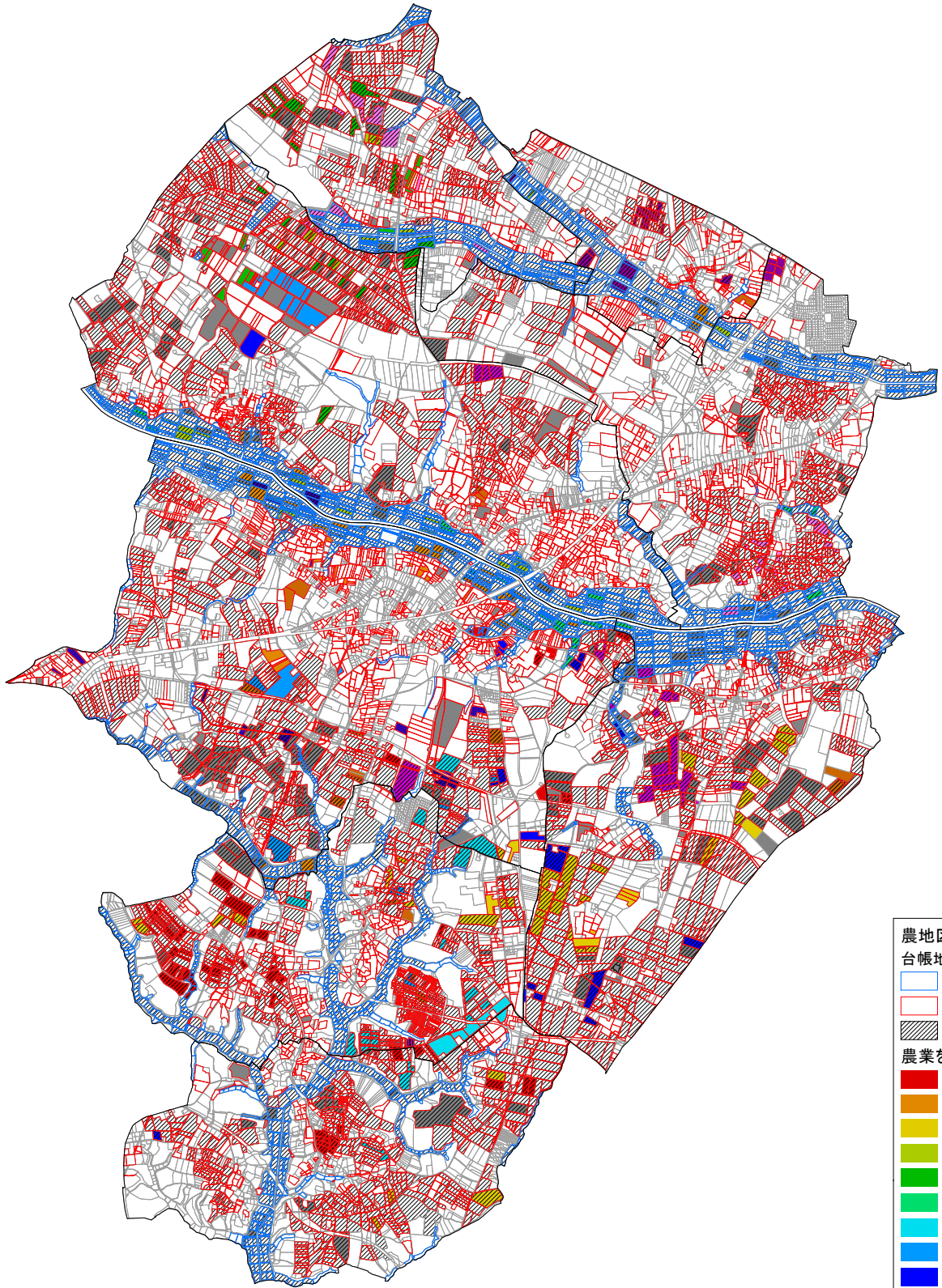


# 堅倉地区



- S01
- S02
- S03
- S04
- S05
- S06
- S07
- S08
- S09
- S10
- S11
- S12
- S13
- S14
- S15
- S16
- S17
- S18
- S19
- S20
- S21
- S22
- S23
- S24
- S25
- S26
- S27
- S28
- S29
- S30
- S31
- S32
- S33
- S34
- S35
- S36
- S37
- S38
- S39
- S40
- S41
- S42
- S43
- S44
- S45
- S46
- S47
- S48
- S49
- S50
- S51



- 農地区分  
台帳地目
- 田
  - 畑
  - 農振農用地
- 農業を担う者
- 営農者A
  - 営農者B
  - 営農者C
  - 営農者D
  - 営農者E
  - 営農者F
  - 営農者G
  - 営農者H
  - 営農者I
  - 営農者J
  - 営農者K
  - 営農者L
  - 営農者M
  - 営農者N
  - 営農者O

1:13,000

0 265 530 1,060 1,590 2,120 2,650  
m